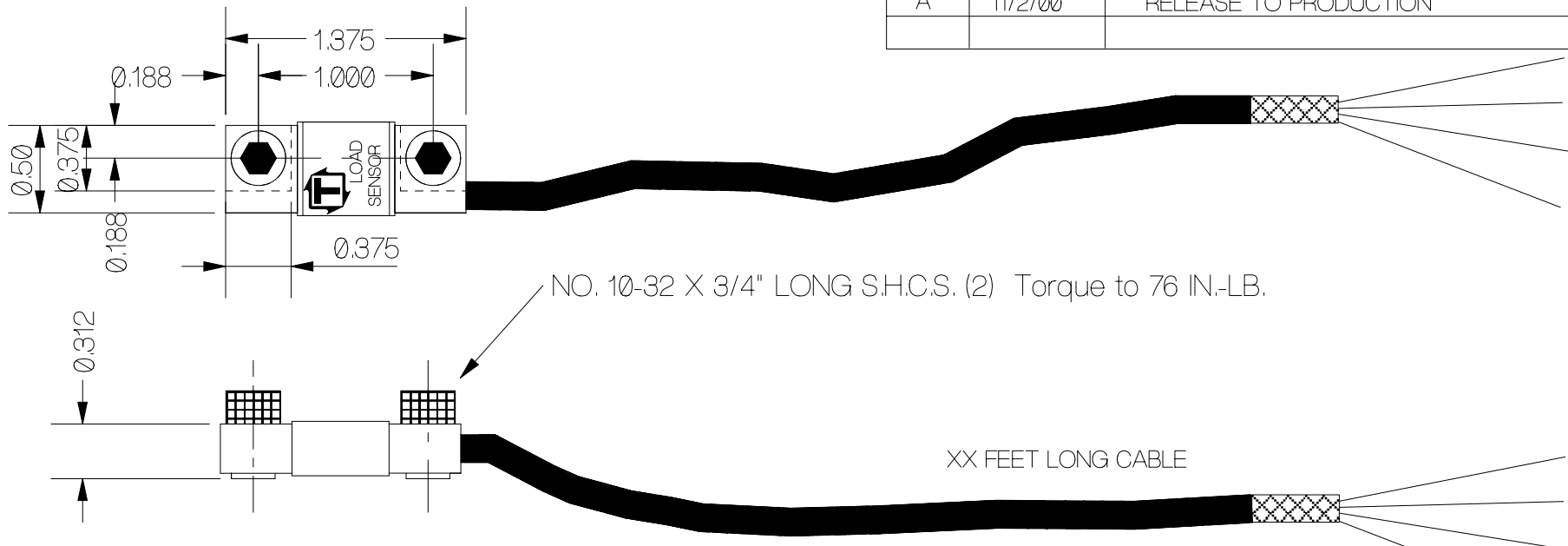


REV	DATE	DESCRIPTION	ECO	SIGN
A	11/2/00	RELEASE TO PRODUCTION	980	RAB



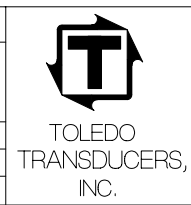
NO. 10-32 X 3/4" LONG S.H.C.S. (2) Torque to 76 IN.-LB.

XX FEET LONG CABLE

Sensitivity, (TYPICAL) TENSION	1 mV/V @ 600 MICRO STRAIN
Nonlinearity	±0.25%
Nonrepeatability	0.1 %
Zero Balance	± 1 %
Compensated Temperature Range	50 to 150° F
Safe Temperature Range	-50 to 200° F
Temperature Effects on Output	0.018%/° F
Temperature Effect on Zero Balance (OPTIONAL TCZ, STATE MATERIAL TYPE SENSOR WILL BE MOUNTED TO.)	0.0025%/° F
Input Impedance, (TYPICAL)	350 ohms
Output impedance, (TYPICAL)	350 ohms
Excitation Voltage, (TYPICAL)	10 VDC or AC rms
Excitation Voltage, MAXIMUM	15 VDC or AC rms
Cable, Hytrel insulated	(4) 26 AWG conductors, braid over foil, (20 ft. std.)
Insulation Resistance	5,000 Megohms at 50 VDC
Maximum Strain, Safe	750 Micro Strain

WIRE COLOR CODE:  
 GREEN + EXC.  
 BLACK - EXC.  
 WHITE + SIG.  
 RED - SIG.  
 SHIELD GROUND  
 BODY  
 (UNLESS OTHERWISE SPECIFIED)

TOLERANCES UNLESS OTHERWISE SPECIFIED:	
XXX = ± 0.005	SCALE: FULL
.XX = ± 0.015	
.X = ± 0.025	
FINISH:	
MAT'L: TOOL STEEL	



Designed By: Mettert	Date: 8/25/94
Drawn By:	Date:
Approved By:	Date:

Title / Description: TT41 MINI LOAD SENSOR		
Dwg. Size: A	Dwg. Type: SPEC	Page 1 of 1

Part No. TT41-XX
File Name 11574SP.FCD
Doc. No. 11574