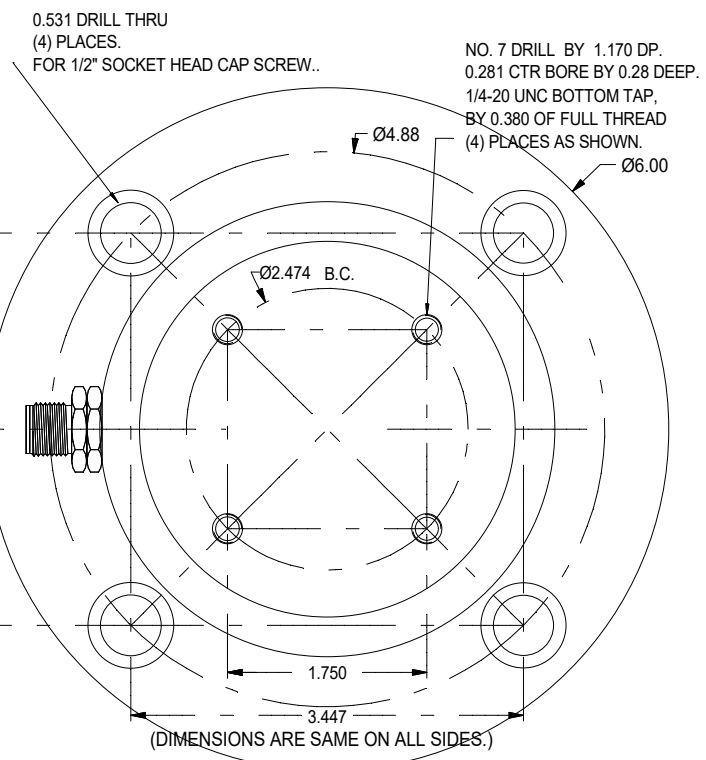
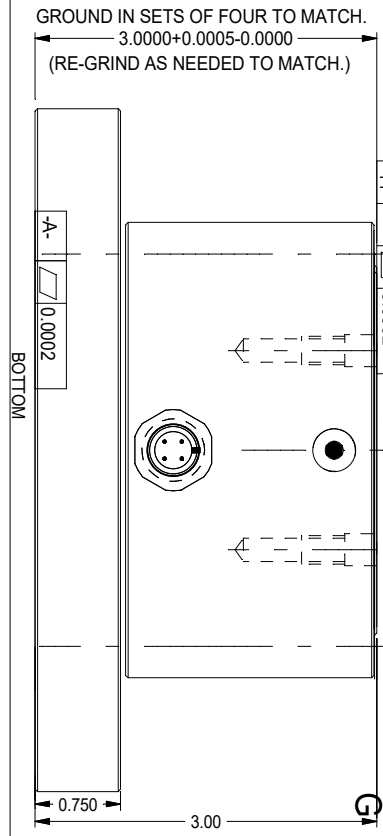
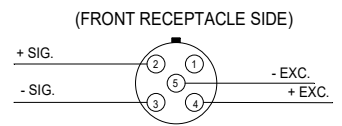


REV	DATE	DESCRIPTION	ECO	SIGN
1	7/21/21	RELEASE TO PILOT		BKM



SPECIFICATIONS:

Rated Capacity, compression	200 TONS, 400 KLBf
Rated Output, typical,	2 mV/V
Combined error	0.25 % F.S.
Non-repeatability	0.05 % F.S.
Zero Balance	1 % R.O.
Temperature Range, Compensated	50° F to 120° F
Temperature Effect, Output	0.015 % of load / ° F
Bridge Impedance, Typical	700 ohms
Excitation Voltage, Typical	10 VDC or VAC rms
Excitation Voltage, Maximum	15 VDC or VAC rms
Insulation Resistance	> 5,000 megohms at 50 VDC
Overload, Safe	150 TONS
Overload, Ultimate	200 TONS
Deflection at Rated Capacity	0.0003 inch
Construction	Tool Steel



TURCK FS 4.5.

CABLE IS INTERCHANGEABLE WITH FSD 4.5

WIRE CODE:	TURCK COLOR	T.T.I. COLOR	PIN NO.
+SIGNAL	WHITE		1
-SIGNAL	BLUE		2
+EXCITATION	BROWN		3
-EXCITATION	BLACK		4
Shield			5

< 1 OHM at cell



TOLERANCES UNLESS OTHERWISE SPECIFIED: .XXX = ± 0.005 .XX = ± 0.015 .X = ± 0.025	SCALE: FULL	 TOLEDO TRANSDUCERS, INC.	Designed By: <b>Mettert</b>	Date: <b>7/21/21</b>	Title / Description: <b>SS1822-200TON LOAD CELL SPECIFICATIONS</b>	Part No. <b>SS1822-200TON</b>
			Drawn By:	Date:		File Name <b>18414</b>
			Approved By:	Date:		Doc. No. <b>18414</b>
			Dwg. Size: <b>A</b>	Dwg. Type: <b>SPEC</b>	Page 1 of 1	