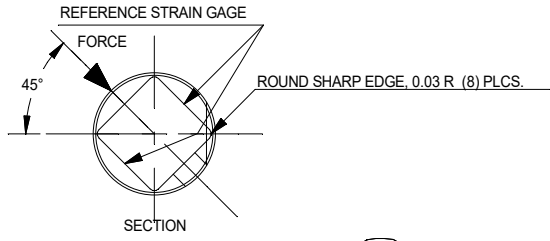
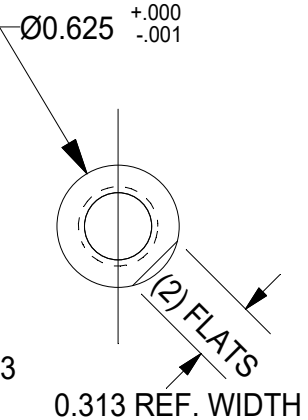
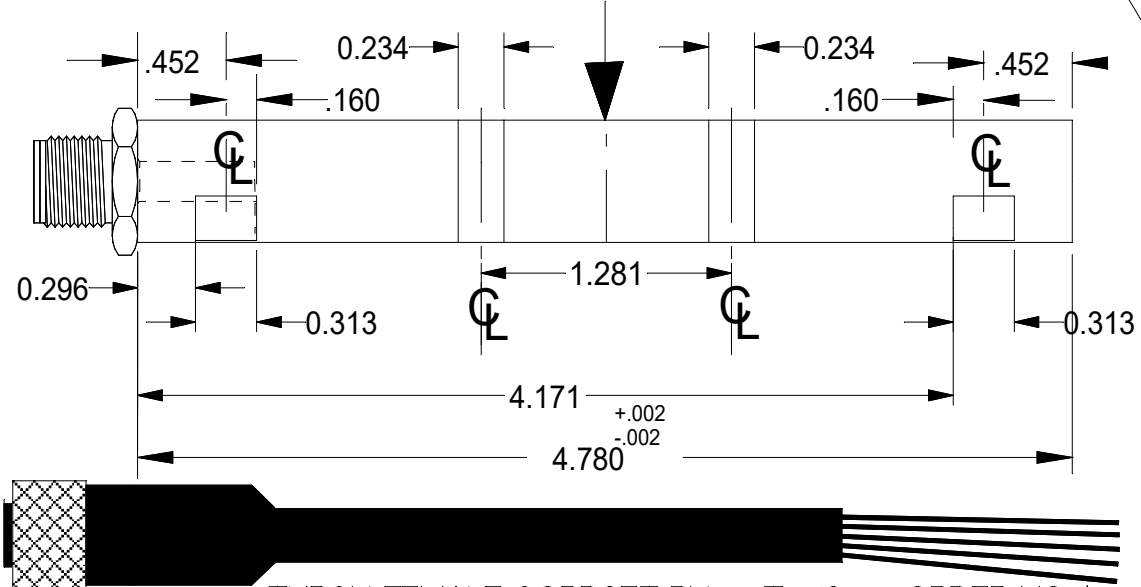


REV	DATE	DESCRIPTION	ECO	SIGN
1	4/30/18	PILOT		BKM



FORCE @ 45° TO



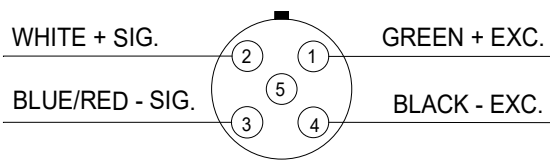
TURCK FEMALE CORDSET RK 4.5T-4/S618, ORDER NO. (4245-222)

SPECIFICATIONS:

WIRE COLOR CODE:	T.T.I. STD.	PIN NO.
+EXCITATION	BROWN GREEN	1
+SIGNAL	WHITE WHITE	2
- SIG	BLUE RED	3
- EXCITATION	BLACK BLACK	4
OPEN		5

RATED CAPACITY	10,000 POUNDS
RATED OUTPUT, (Trimmed from 2.7 mV/V)	2 mV/V typical
COMBINED ERROR	0.5 %
NON-REPEATABILITY	0.05 %
ZERO BALANCE	±1 %
TEMPERATURE RANGE, COMPENSATED	+14 TO 104° F
TEMPERATURE EFFECT, OUTPUT	0.014 % / ° F
TEMPERATURE EFFECT, ZERO BALANCE	0.05 % / ° F
INPUT IMPEDANCE	350 OHMS, typical
EXCITATION VOLTAGE (typical)	10 VDC or VAC rms
EXCITATION VOLTAGE, MAXIMUM	15 VDC or VAC rms
INSULATION RESISTANCE	5,000 MEG OHMS @ 50 VDC
MAXIMUM LOAD, SAFE	150 % F.S.
MAXIMUM LOAD, ULTIMATE	300 % F.S.

(FRONT RECEPTACLE SIDE)



TOLERANCES UNLESS OTHERWISE SPECIFIED:	
.XXX = ± 0.005	SCALE: FULL
.XX = ± 0.015	
.X = ± 0.025	
FINISH: 32 MICRO INCH	
MAT'L: AISI 4340	
HARDNESS: Rc 44-50	



Designed By:	Mettert
Drawn By:	
Approved By:	

Date:	4/30/18
Date:	
Date:	

Title / Description:	
MODEL SS1759-10KLB	
CLEVIS PIN LOAD CELL	
Dwg. Size:	A
Dwg. Type:	FAB

Part No.	SS1759-10KLB
File Name	17939
Doc. No.	17939