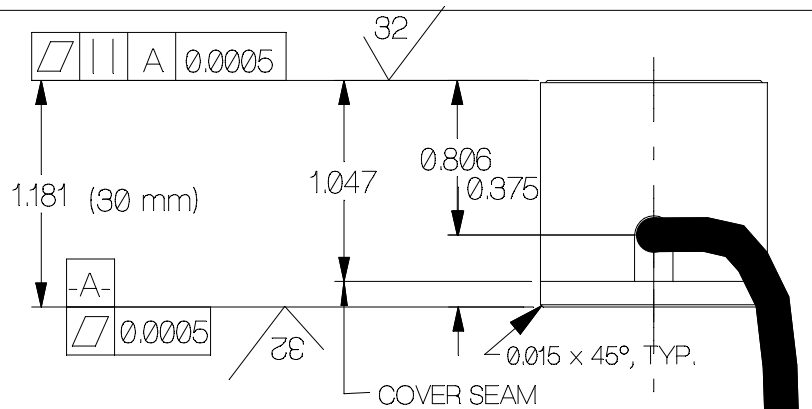
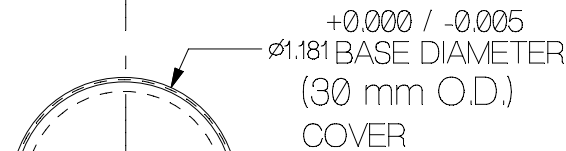
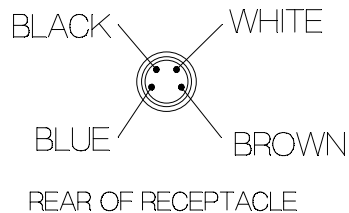


REV	DATE	DESCRIPTION	ECO	SIGN
1				



SPECIFICATIONS:

RATED CAPACITY	200kN
RATED OUTPUT, typical	3 mV/V
COMBINED ERROR	± 0.5 %
NON-REPEATABILITY	< 0.05 %
ZERO BALANCE	(0.000 to 0.050 mV/V) 0/+ 3 %
TEMPERATURE RANGE, COMPENSATED	+60 TO 160° F
TEMPERATURE EFFECT, OUTPUT	0.015 % of Load / ° F
TEMPERATURE EFFECT, ZERO BALANCE	Not rated
INPUT IMPEDANCE	1,000 OHMS, typical
OUTPUT IMPEDANCE	1,000 OHMS, typical
EXCITATION VOLTAGE (typical)	10 VDC or VAC rms
EXCITATION VOLTAGE, MAXIMUM	15 VDC or VAC rms
INSULATION RESISTANCE	5,000 MEG OHMS @ 50 VDC
MAXIMUM LOAD, SAFE	125 % F.S.
MAXIMUM LOAD, ULTIMATE	200 % F.S.
DEFLECTION AT RATED CAPACITY, APPROXIMATE	0.002 in.
CONSTRUCTION	ALLOY STEEL STAINLESS STEEL



WIRE COLOR CODE:		PIN NO.
+EXCITATION	BROWN	1
-SIGNAL	WHITE	2
-EXCITATION	BLUE	3
+ SIGNAL	BLACK	4



TURCK PKGM-4/S90/S618, ORDER NO. (4247-222)

TOLERANCES UNLESS OTHERWISE SPECIFIED:

XXX = ± 0.005
XX = ± 0.015
X = ± 0.025

SCALE: FULL

FINISH: AS NOTED

MAT'L: ALLOY TOOL STEEL

HARDNESS: Rc 40-46



TOLEDO
TRANSDUCERS,
INC.

Designed By: METTERT

Date: 7/20/2000

Drawn By:

Date:

Approved By:

Date:

Title / Description:

SS1705-200kN mV/V
COMPRESSION LOAD CELL
SPECIFICATION

Dwg Size: A
Dwg Type: SPEC

Page 1 of 1

Part No. SS1705-200kN

File Name 17545

Doc. No. 17545