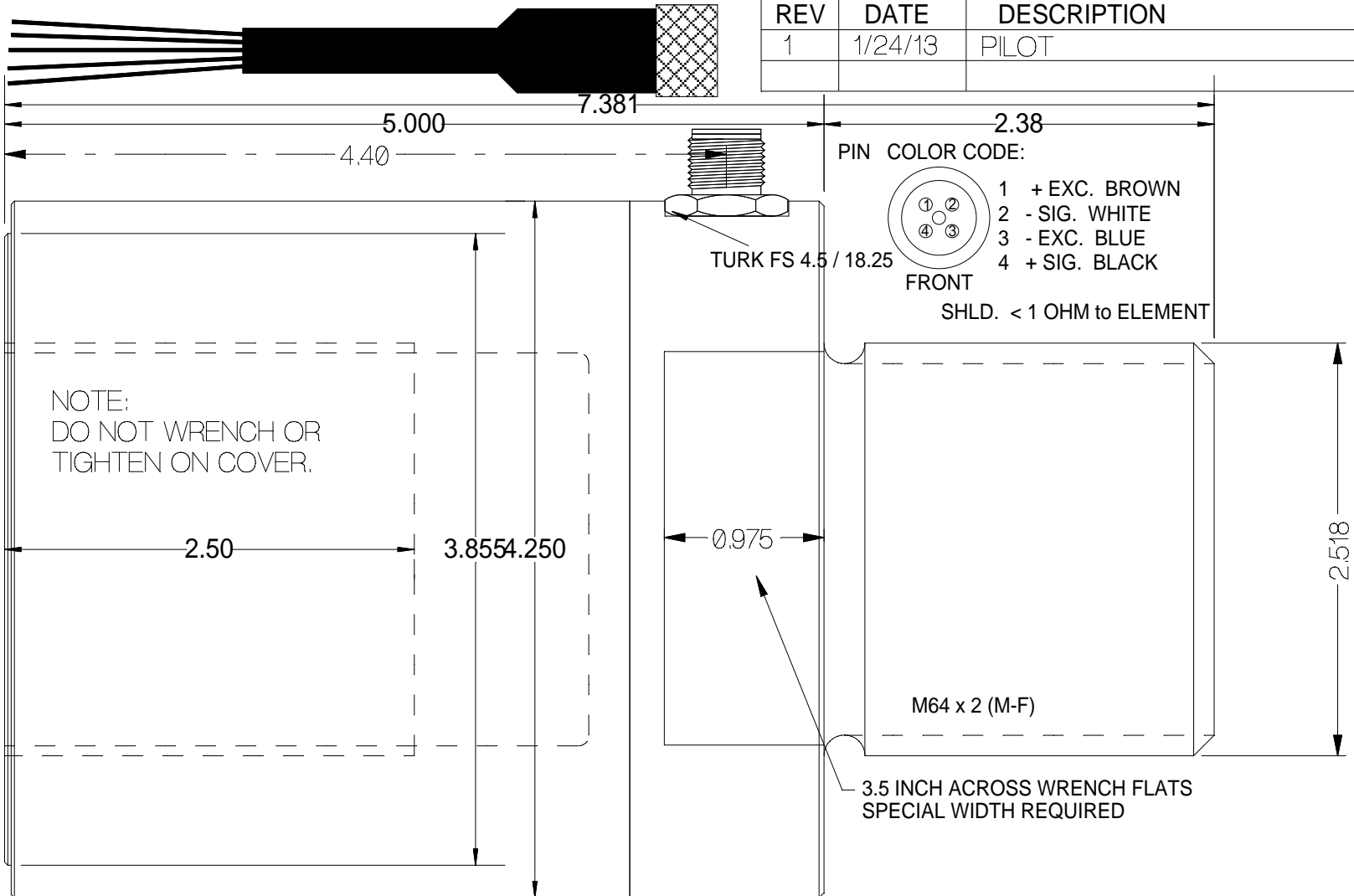


REV	DATE	DESCRIPTION	ECO	SIGN
1	1/24/13	PILOT		BKM



SPECIFICATIONS:

RATED CAPACITY	1,000,000 N
RATED OUTPUT, matched	2.00 ± 0.01 mV/V
COMBINED ERROR	± 0.25 %
NON-REPEATABILITY	< 0.05 %
ZERO BALANCE	± 1 %
TEMPERATURE RANGE, COMPENSATED	+60 TO 160° F
TEMPERATURE EFFECT, OUTPUT	0.0005 % of Load / ° F
TEMPERATURE EFFECT, ZERO BALANCE	Not rated

SPECIFICATIONS:

INPUT IMPEDANCE	700 OHMS, typical
OUTPUT IMPEDANCE	700 OHMS, typical
EXCITATION VOLTAGE (typical)	10 VDC or VAC rms
EXCITATION VOLTAGE, MAXIMUM	15 VDC or VAC rms
INSULATION RESISTANCE	5,000 MEG OHMS @ 50 VDC
MAXIMUM LOAD, SAFE	150 % F.S.
MAXIMUM LOAD, ULTIMATE	300 % F.S.
DEFLECTION AT RATED CAPACITY, APPROXIMATE	0.002 in.

TOLERANCES UNLESS OTHERWISE SPECIFIED:

.XXX = ± 0.005
.XX = ± 0.015
.X = ± 0.025

SCALE: FULL

FINISH: 32 MICRO INCH OR LESS
STAINLESS STEEL COVER,
TOOL STEEL ELEMENT



Designed By: **Mettert**

Drawn By:

Approved By:

Date: **1/24/13**

Date:

Date:

Title / Description:
**SS1655-1MN SHORT ROD END
LOAD CELL SPECS**

Dwg. Size: **A**
Dwg. Type: **SPEC**

Page 1 of 1

Part No. **SS1687-1MN**

File Name **17436**

Doc. No. **17436**