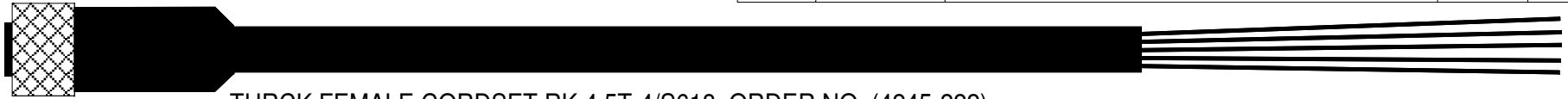
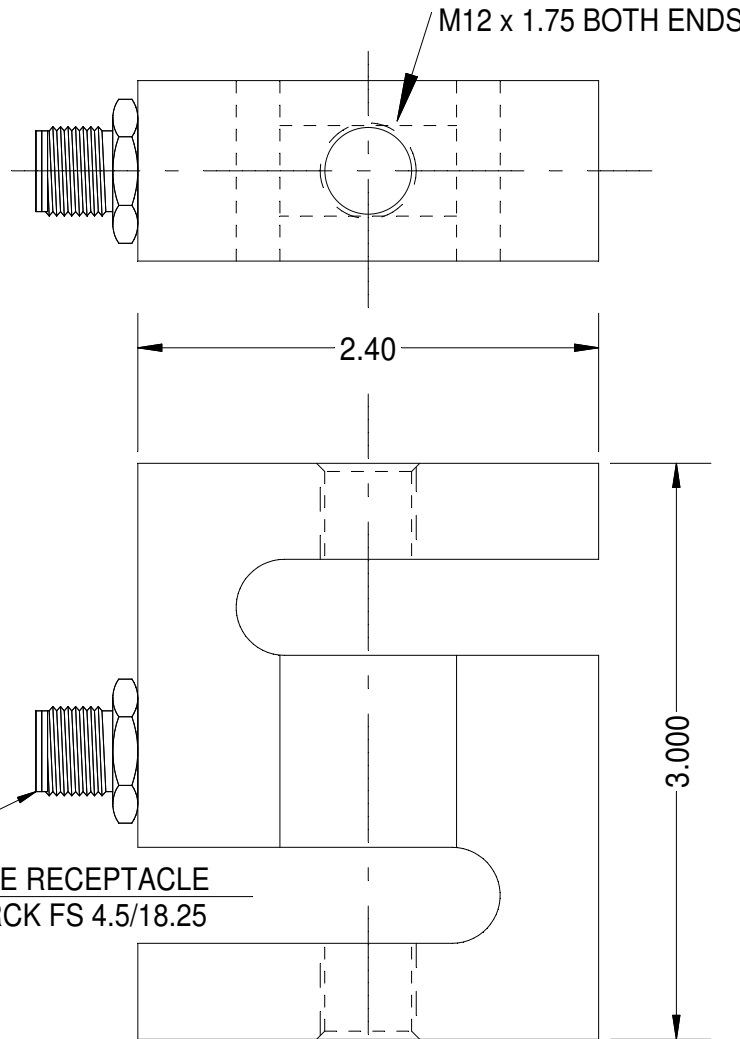


REV	DATE	DESCRIPTION	ECO	SIGN
1	8/23/13	PILOT		BKM



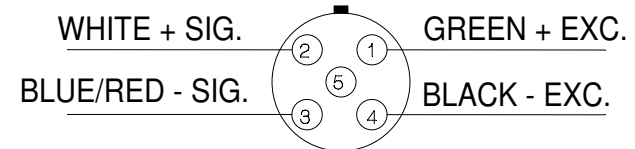
TURCK FEMALE CORDSET RK 4.5T-4/S618, ORDER NO. (4245-222)



Rated Capacity	980N, 220 LBS
Rate Output, ± 0.003 mV/V	3.000 mV/V
Combined Error	<0.05 %
Non-repeatability	0.01 %
Creep, 30 minutes	0.05 %
Zero Balance	± 10 %
Temperature Range, Compensated	+ 14 to + 104° F
Temperature Effect, Output	0.05 % of load / 100° F
Temperature Effect, Zero Balance	0.15% / 100° F
Input Impedance	410 Ohms ± 20 %
Output Impedance	350 Ohms ± 1 %
Insulation Resistance	5000 Megohms at 50 VDC
Maximum Load, Safe	150 %
Maximum Load, Ultimate	200 %

WIRE COLOR CODE: T.T.I. STD.			PIN NO.
+EXCITATION	BROWN	GREEN	1
+SIGNAL	WHITE	WHITE	2
-SIG	BLUE	RED	3
- EXCITATION	BLACK	BLACK	4

(FRONT RECEPTACLE SIDE)



TOLERANCES UNLESS OTHERWISE SPECIFIED:
 XXX = ± 0.005
 XX = ± 0.015
 X = ± 0.025

SCALE: FULL



TOLEDO
 TRANSDUCERS,
 INC.

Designed By:
METTERT

Date:
8/23/93

Drawn By:

Date:

Approved By:

Date:

Title / Description:
SS1667 980 N
"S" BEAM
LOAD CELL

Part No.
SS1667-980N

File Name
17341

MAT'L: 17-4 PH STAINLESS STEEL

Dwg. Size:
A

Dwg. Type:
SPEC

Page 1 of 1

Doc. No.
17341