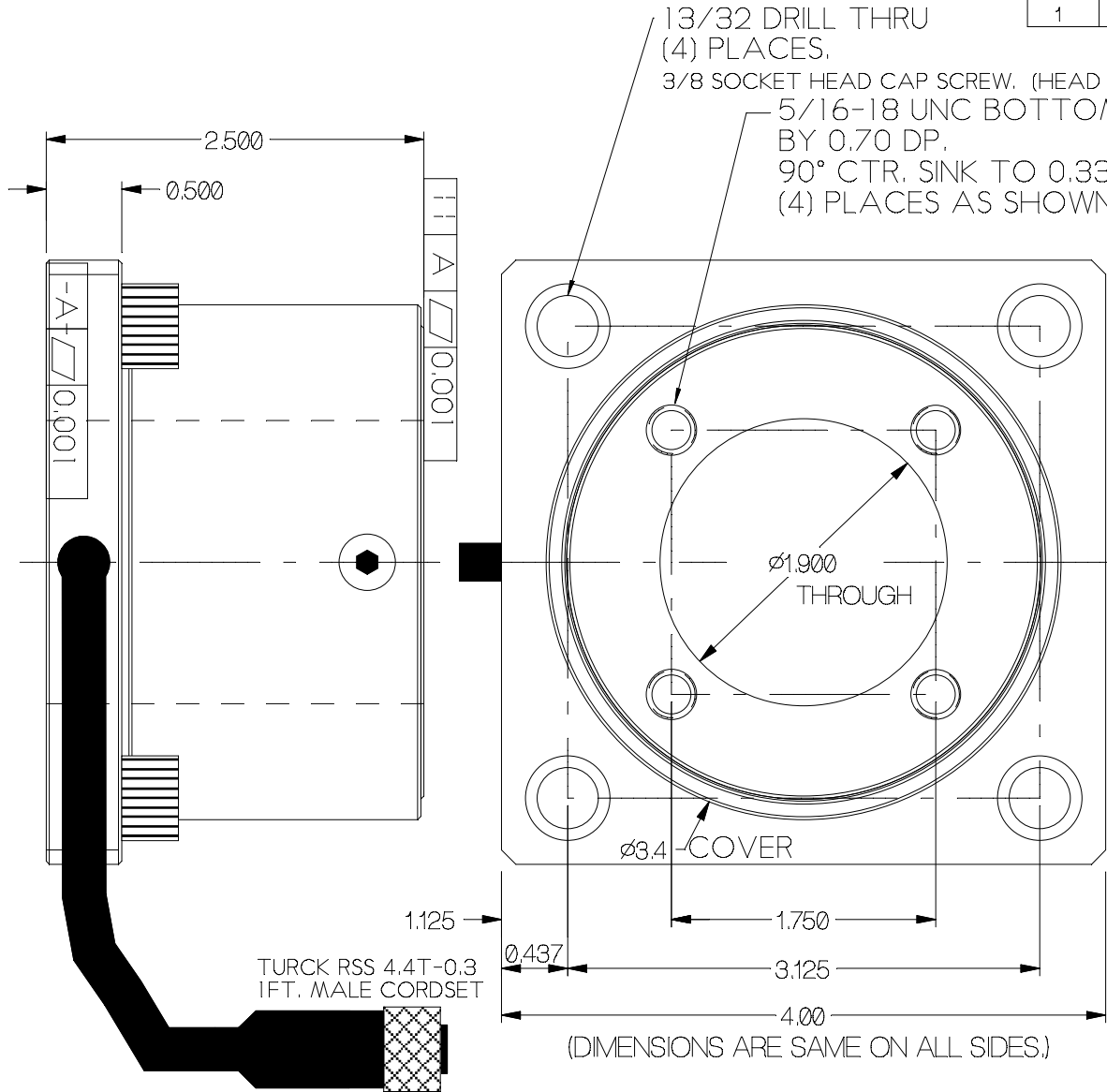


REV	DATE	DESCRIPTION	ECO	SIGN
1	5/31/01	RELEASE TO PILOT		BKM



13/32 DRILL THRU
(4) PLACES.
3/8 SOCKET HEAD CAP SCREW. (HEAD O.D. SHOWN, LARGER THAN THROUGH HOLE.)
5/16-18 UNC BOTTOM TAP,
BY 0.70 DP.
90° CTR. SINK TO 0.33 DIA,
(4) PLACES AS SHOWN.

NOTE: OTHER BOLT PATTERNS AVAILABLE.

SPECIFICATIONS:

Rated Capacity, compression or tension	2,000 pounds
Rated Output, typical, + signal in compression with color code shown.	1 mV/V
Combined error	0.25 % F.S.
Non-repeatability	0.05 % F.S.
Zero Balance	1 % R.O.
Temperature Range, Compensated	50° F to 120° F
Temperature Effect, Output	0.0008 % of load / ° F
Temperature Effects, Zero Balance	0.01 % / R.O. / ° F
Bridge Impedance, Typical	700 ohms
Excitation Voltage, Typical	10 VDC or VAC rms
Excitation Voltage, Maximum	15 VDC or VAC rms
Insulation Resistance	> 5,000 megohms at 50 VDC
Overload, Safe	12,000 LB
Overload, Ultimate	20,000 LB
Direct side load, Ultimate*	4,000 pounds
Maximum moment, Ultimate**	6,000 inch-pounds
Twisting moment, Ultimate***	6,000 inch-pounds
Deflection at Rated Capacity	0.0003 inch
Construction	Alloy Aluminum

* Direct side load tested with no other loads present.

** Moment tested 600 pounds at a distance of 10 inches from top of cell, no other loads present.

*** Twisting moment tested to 6,000 IN-Lbs, no other loads present.
Ultimate means that the load cell experiences permanent structural changes that will not stabilize with each repeating load. Under no circumstances exceed the ultimate load rating.

WIRE CODE:	TURCK COLOR	T.T.I. COLOR	PIN NO.
+EXCITATION	BROWN	GREEN	1
+SIGNAL	WHITE	WHITE	2
-SIGNAL	BLUE	RED	3
-EXCITATION	BLACK	BLACK	4
Shield			< 1 OHM at cell

TOLERANCES UNLESS OTHERWISE SPECIFIED:

XXX = ± 0.005

XX = ± 0.015

X = ± 0.025

SCALE: FULL



TOLEDO
TRANSDUCERS,
INC.

Designed By: Mettert

Date: 5/22/01

Drawn By:

Date:

Approved By:

Date:

Title / Description:

SS1622-2K UNIVERSAL
LOAD CELL SPECIFICATIONS

Dwg. Size:

Dwg. Type:

Page 1 of 1

Part No. SS1622-2K

File Name 17040

Doc. No. 17040