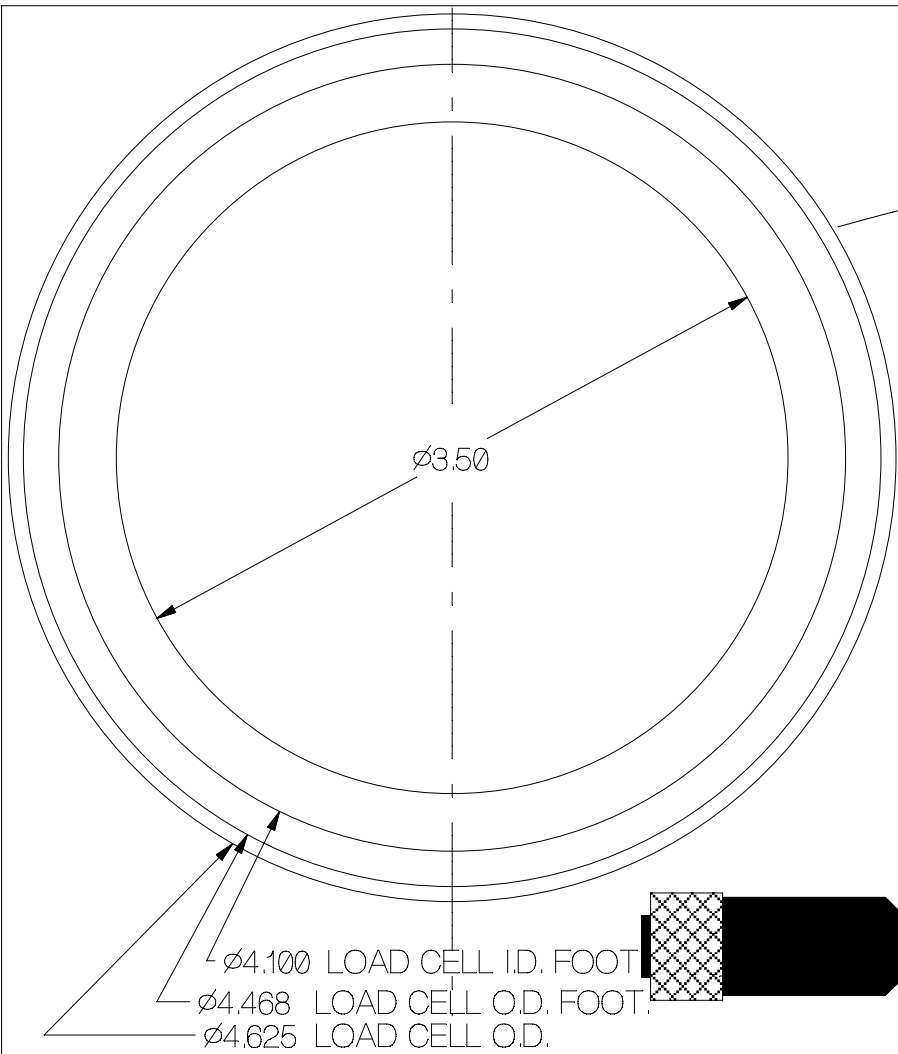
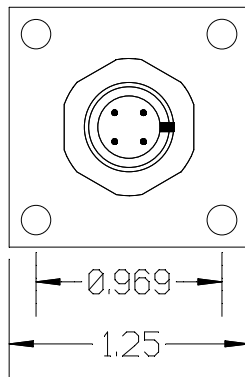
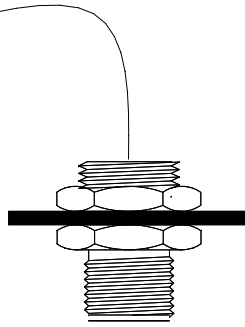


REV	DATE	DESCRIPTION	ECO	SIGN
1	8/6/08	RELEASE TO PILOT		



2.25 / 2.50 IN.



0.969  
1.25

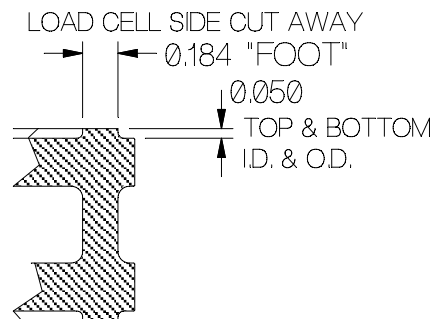
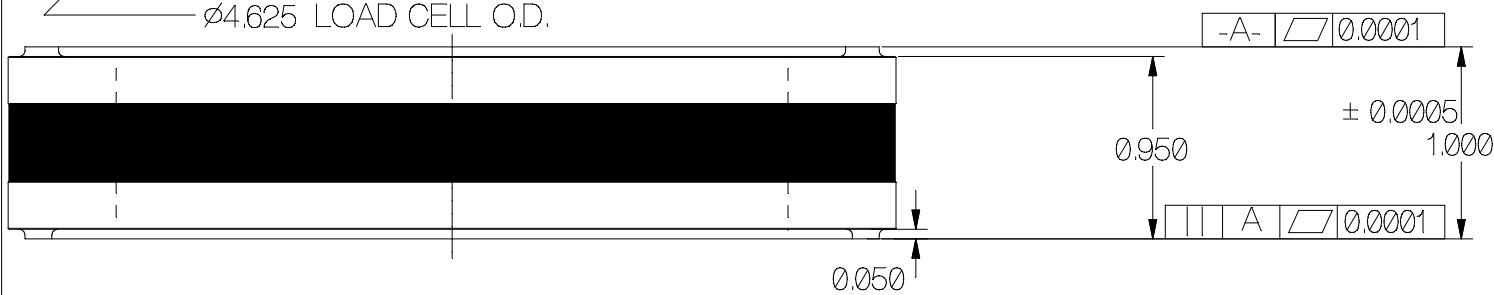
SPECIFICATIONS:

Rated Capacity, (25 U.S. TONS)	50,000 pounds
Rated Output, typical	2.0 mV/V
Combined error	0.5 % F.S.
Non-repeatability	0.05 % F.S.
Zero Balance	1 % R.O.
Temperature Range, Compensated	50 F to 120 F
Temperature Effect, Output	0.0008 % of load / ° F
Temperature Effects, Zero Balance	0.02 % / R.O. / ° F
Bridge Impedance, Typical	350 ohms
Excitation Voltage, Typical	10 VDC or VAC rms
Excitation Voltage, Maximum	15 VDC or VAC rms
Insulation Resistance	> 5,000 megohms at 50 VDC
Overload, Safe	150 % over capacity
Overload, Ultimate	200 % over capacity
Deflection at Rated Capacity, Approximate	0.001 inch
Construction	Tool steel

ZINC PLT. 16 GAGE STEEL.

Cable color code:  
 Brown + Excitation  
 Black - Excitation  
 White + Signal  
 Blue - Signal  
 Shield < 1 OHM at cell

∅4.100 LOAD CELL I.D. FOOT  
 ∅4.468 LOAD CELL O.D. FOOT  
 ∅4.625 LOAD CELL O.D.



TOLERANCES UNLESS OTHERWISE SPECIFIED:  
 .XXX = ± 0.005  
 .XX = ± 0.015  
 .X = ± 0.025  
 SCALE: FULL  
 FINISH: NO MACHINE MARKS  
 MAT'L: ALLOY STEEL  
 HARDNESS: Rc 40-46



Designed By: Mettler  
 Drawn By:  
 Approved By:

Date: 8/6/08  
 Date:  
 Date:

Title / Description:  
 SS1579-25 TON  
 DOUGHNUT LOAD CELL  
 SPECIFICATIONS  
 Dwg. Size: A Dwg. Type: SPEC  
 Page 1 of 1

Part No. SS1579-25T  
 File Name 16718  
 Doc. No. 16718