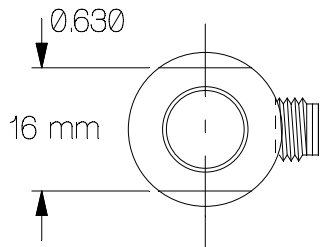
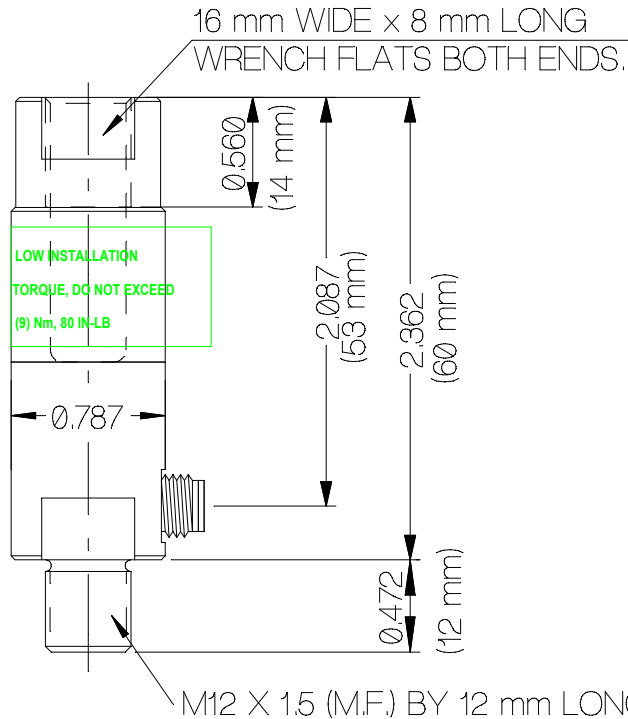


REV	DATE	DESCRIPTION	ECO	SIGN
1	5/3/13	RELEASE TO PILOT		BKM

SPECIFICATIONS:

RATED CAPACITY	1.5 kN
RATED OUTPUT, matched	1.1 ± 0.01 mV/V
COMBINED ERROR	± 0.25 %
NON-REPEATABILITY	< 0.05 %
ZERO BALANCE	± 1 %
TEMPERATURE RANGE, COMPENSATED	+60 TO 160° F
TEMPERATURE EFFECT, OUTPUT	0.0005 % of Load / ° F
TEMPERATURE EFFECT, ZERO BALANCE	Not rated
INPUT IMPEDANCE	350 typical
OUTPUT IMPEDANCE	350 OHMS, typical
EXCITATION VOLTAGE (typical)	10 VDC or VAC rms
EXCITATION VOLTAGE, MAXIMUM	15 VDC or VAC rms
INSULATION RESISTANCE	5,000 MEG OHMS @ 50 VDC
MAXIMUM LOAD, SAFE	550 % F.S.
MAXIMUM LOAD, ULTIMATE	750 % F.S.
DEFLECTION AT RATED CAPACITY, APPROXIMATE	0.002 in.
CONSTRUCTION	STAINLESS STEEL COVER, TOOL STEEL ELEMENT
MAXIMUM RETRACTION FORCE	5 kN
LOW INSTALLATION TORQUE, DO NOT EXCEED	(28 Nm) 250 LB-IN



TOLERANCES UNLESS OTHERWISE SPECIFIED:	
.XXX = ± 0.005	SCALE: FULL
.XX = ± 0.015	
.X = ± 0.025	
FINISH: 32 MICRO INCH OR LESS	



Designed By:	Mettert
Drawn By:	
Approved By:	

Date:	5/3/13
Date:	
Date:	

Title / Description:		
SS1546-1.5KN INSERTION LOAD CELL SPECIFICATIONS		
Dwg. Size:	Dwg. Type:	
A	SPEC	Page 1 of 1

Part No.	SS1546-1.5KN
File Name	17291
Doc. No.	17291