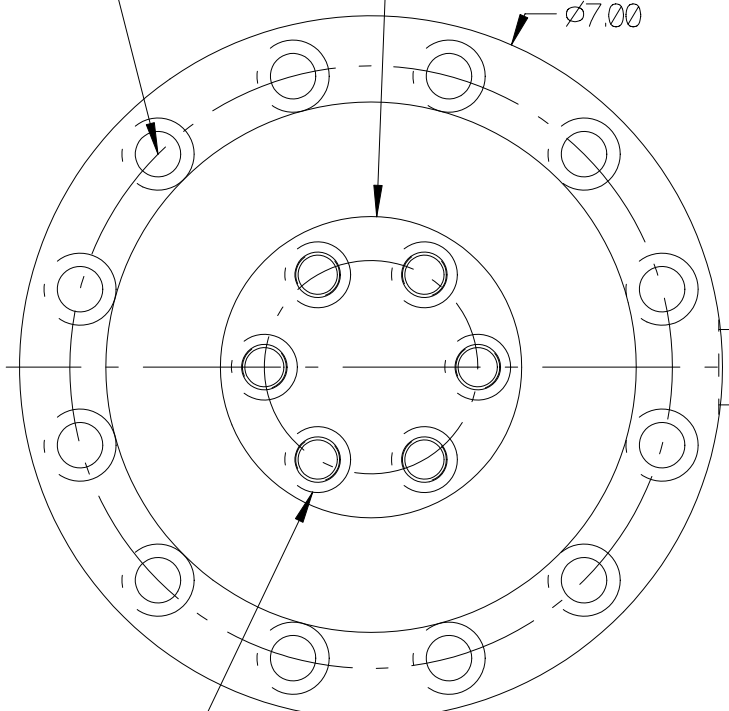


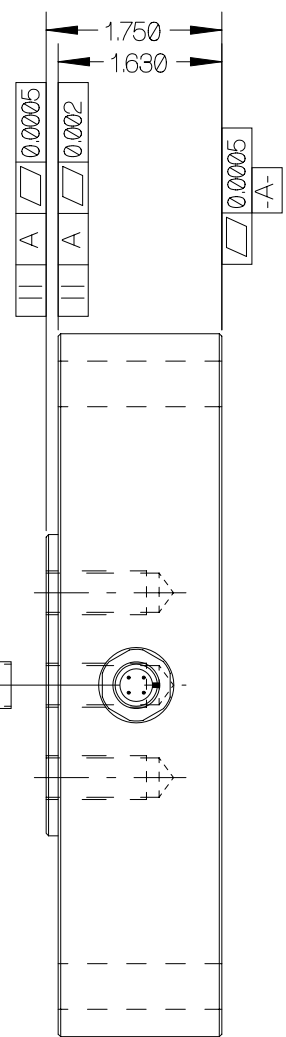
(12) 29/64 (0.454) DRILL HOLES,
90° X 0.48 CTR. SINK (12) PLCS.,
ON A 6.000 BOLT CIRCLE

(USE GRADE EIGHT 7/16-20 UNF
SOCKET HEAD CAP SCREW.)

TOP MOUNTING FOOT
Ø3.00



(6) 7/16-20 UNF 2B TAP by 1.00 DEEP,
ON A 2.125 BOLT CIRCLE.
(USE GRADE EIGHT 7/16-20 UNF
SOCKET HEAD CAP SCREW.)



FATIGUE RATED FOR INFINITE LIFE SPECIFICATIONS:

Rated Capacity, tension and or compression	5,000 pounds
Rated Output, (Ten. + out., Comp. - out.), Typical	2 mV/V
Combined error	0.05 % F.S.
Non-repeatability	0.05 % F.S.
Zero Balance	1 % R.O.
Temperature Range, Compensated	50° F to 150° F
Temperature Effect, Output	0.0008 % of load / ° F
Temperature Effects, Zero Balance	0.0015 % / R.O. / ° F
Temperature Range, Useable	-65° F to 200° F
Bridge Impedance, Typical	700 ohms
Excitation Voltage, Typical	10 VDC or VAC rms
Excitation Voltage, Maximum	15 VDC or VAC rms
Insulation Resistance	> 5,000 megohms at 50 VDC
Overload, Safe	150 % of Rated Capacity
Overload, Ultimate	200 % of Rated Capacity
Side Load, Safe	100 % of Rated Capacity
Construction	Alloy Tool Steel
Finish	Gloss Black

Cable color code:

Brown	+ Excitation
Black	- Excitation
White	+ Signal
Blue	- Signal
Shield	Floats at cell
Cell Receptacle, Turck	FS 4.5/18.25
Cable, Turck (4 METERS LONG)	RK 4.5-4/S618

(REAR RECEPTACLE SIDE)

GREEN TO BROWN + EXC. WHITE TO WHITE + SIG.
BLACK TO BLACK - EXC. RED TO BLUE - SIG.



TURCK RK4.5-4/S618, ORDER NO. (4245-222)

T.T.I. NO. (4241-732)
TURK FS 4.5/18.25 or EQ.



Designed By: Mettert	Date: 10/23/03	Title / Description: SS1437 5,000 POUND UNIVERSAL LOAD CELL SPECIFICATIONS		Part No. SS1437-5K
Drawn By:	Date:			File Name 13719SP.FCD
Approved By:	Date:	Dwg. Size: A	Dwg. Type: SPEC	Doc. No. 13719