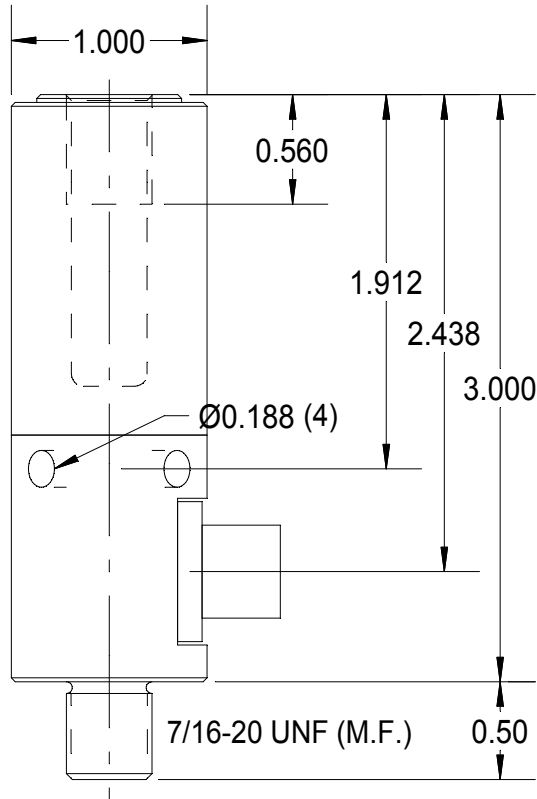
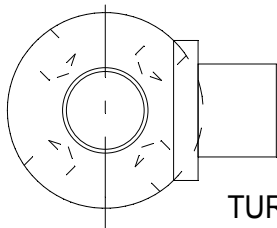


REV	DATE	DESCRIPTION	ECO	SIGN
1	2/2/05	RELEASE TO PILOT		BKM



USE FRACTIONAL FIXED HEAD-PIN STYLE
 SPANNER WRENCH.
 McMASTER-CARR NO. 5475A11.



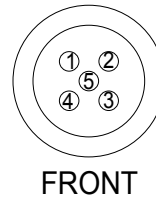
TURK FS 4.5 / 18.25

SPECIFICATIONS:

RATED CAPACITY	5,000 N
RATED OUTPUT, matched	2.00 ± 0.01 mV/V
COMBINED ERROR	± 0.25 %
NON-REPEATABILITY	< 0.05 %
ZERO BALANCE	± 1 %
TEMPERATURE RANGE, COMPENSATED	+60 TO 160° F
TEMPERATURE EFFECT, OUTPUT	0.0005 % of Load / ° F
TEMPERATURE EFFECT, ZERO BALANCE	Not rated
INPUT IMPEDANCE	1,000 typical
OUTPUT IMPEDANCE	1,000 OHMS, typical
EXCITATION VOLTAGE (typical)	10 VDC or VAC rms
EXCITATION VOLTAGE, MAXIMUM	15 VDC or VAC rms
INSULATION RESISTANCE	5,000 MEG OHMS @ 50 VDC
MAXIMUM LOAD, SAFE	300 % F.S.
MAXIMUM LOAD, ULTIMATE	500 % F.S.
DEFLECTION AT RATED CAPACITY, APPROXIMATE	0.001 in.
CONSTRUCTION	STAINLESS STEEL COVER, TOOL STEEL ELEMENT

PIN COLOR CODE:

- 1 + EXC.
- 2 - SIG.
- 3 - EXC.
- 4 + SIG.



FRONT

WIRE COLOR CODE:		T.T.I. STD.	PIN NO.
+EXCITATION	BROWN	GREEN	1
-SIGNAL	WHITE	RED	2
-EXCITATION	BLUE	BLACK	3
+ SIGNAL	BLACK	WHITE	4

SHLD. < 1 OHM to ELEMENT



TOLERANCES UNLESS OTHERWISE SPECIFIED:

.XXX = ± 0.005
 .XX = ± 0.015
 .X = ± 0.025

SCALE: FULL

FINISH: 32 MICRO INCH OR LESS



TOLEDO
 TRANSDUCERS,
 INC.

Designed By: **Mettert**

Date: **1/2/02**

Drawn By:

Date:

Approved By:

Date:

Title / Description:

**SS1395-5kN INSERTION
 LOAD CELL SPECIFICATIONS
 TOX P.N. ZLC0005-US**

Dwg. Size:
A

Dwg. Type:
SPEC

Page 1 of 1

Part No. **SS1395-5KN**

File Name

Doc. No.