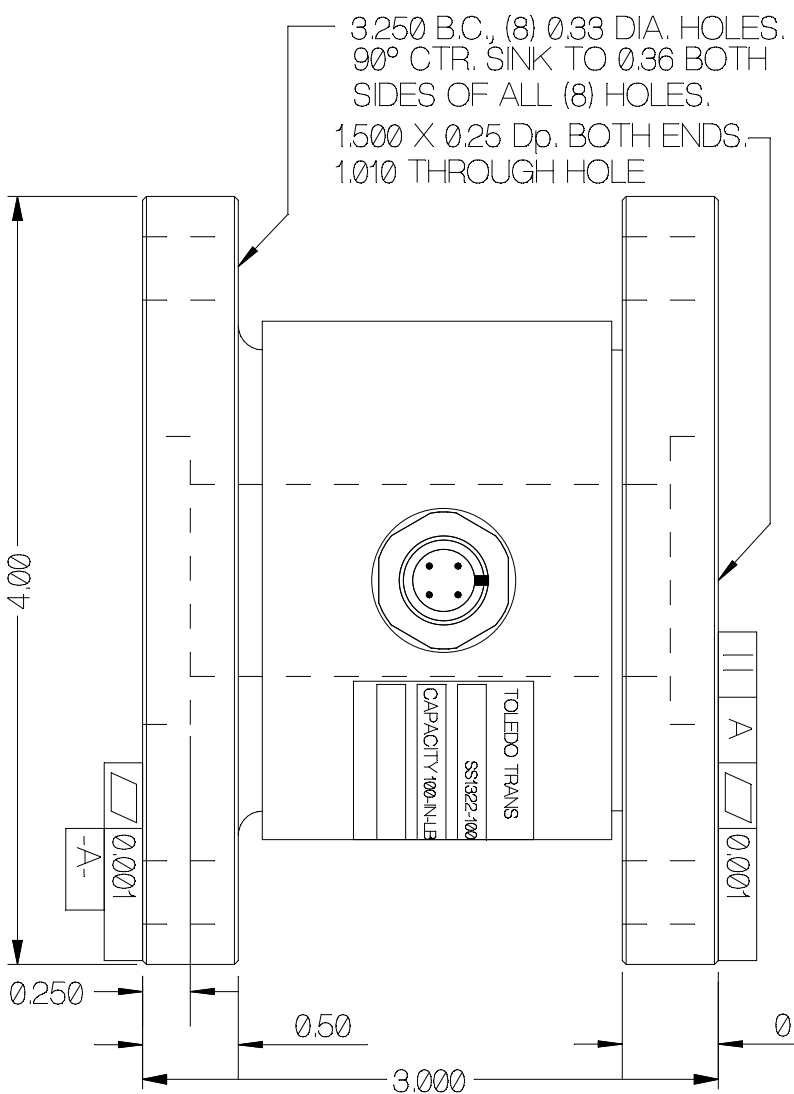


REV	DATE	DESCRIPTION	ECO	SIGN
1	4/28/11	RELEASE TO PRODUCTION		BKM



SPECIFICATIONS:

Rated Capacity, (Clockwise + Output)	200 inch-pounds
Rated Output, typical	2 mV/V
Combined error	0.1 % F.S.
Non-repeatability	0.05 % F.S.
Zero Balance	1 % R.O.
Temperature Range, Compensated	50 F to 120 F
Temperature Effect, Output	0.005 % of load / F
Temperature Effects, Zero Balance	0.005 % / R.O. / F
Bridge Impedance, Typical	350 ohms
Excitation Voltage, Typical	10 VDC or VAC rms
Excitation Voltage, Maximum	15 VDC or VAC rms
Insulation Resistance	> 5,000 megohms at 50 VDC
Overload, Safe	150 % over capacity
Overload, Ultimate	200 % over capacity
Construction	Aluminum

WIRE COLOR CODE:	T.T.I. STD.	PIN NO.
+EXCITATION	BROWN GREEN	1
+SIGNAL	WHITE WHITE	2
- SIG	BLUE RED	3
- EXCITATION	BLACK BLACK	4
OPEN		5



TOLERANCES UNLESS OTHERWISE SPECIFIED:
 XXX = ± 0.005
 XX = ± 0.015
 X = ± 0.025
 FINISH: FINE BRUSHED LOOK ON TOOL MARKS
 MAT'L: ANY ALUMINUM



Designed By: Mettert
 Drawn By:
 Approved By:

Date: 2/7/00
 Date:
 Date:

Title / Description:
 SS1322-200 IN-LB RADIAL
 FORCE TRANSDUCER
 SPECIFICATIONS
 Dwg Size: A
 Dwg. Type: SPEC
 Page 1 of 1

Part No. SS1322-200 IN-LB
 File Name 17244
 Doc. No. 17244