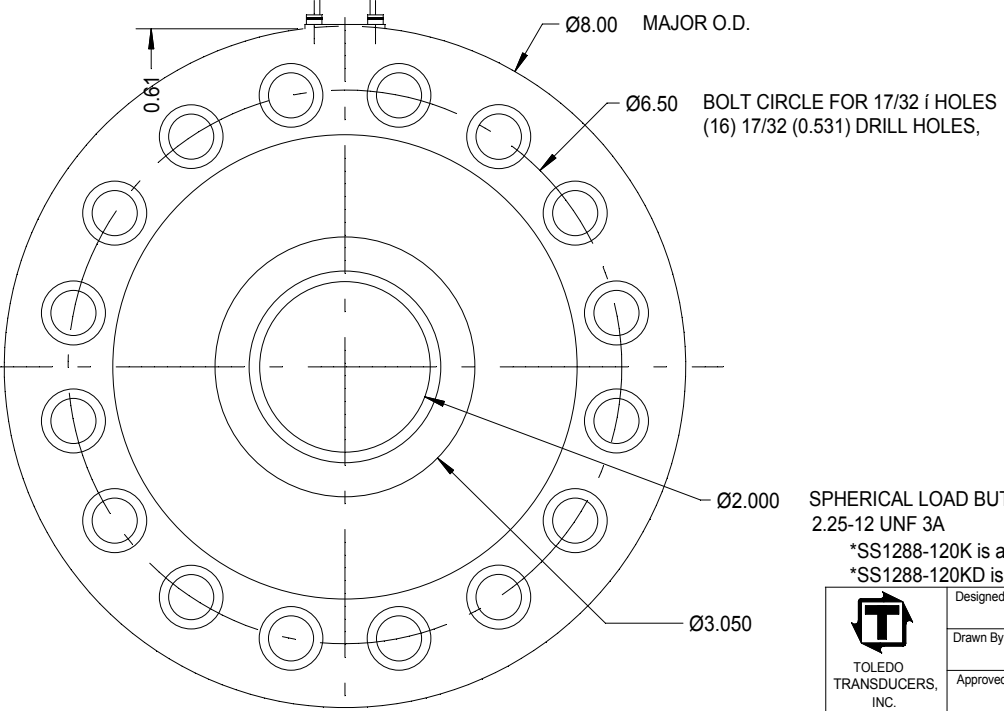
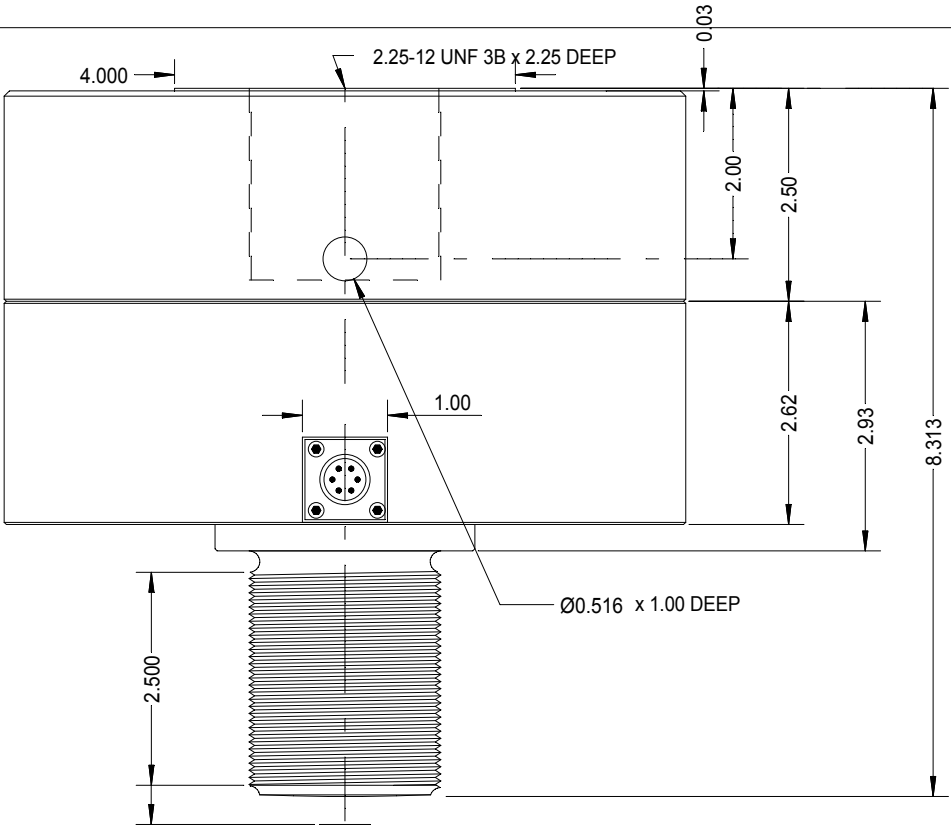


REV	DATE	DESCRIPTION	ECO	SIGN
1	10/8/99	RELEASE FOR QUOTE	832	RAB

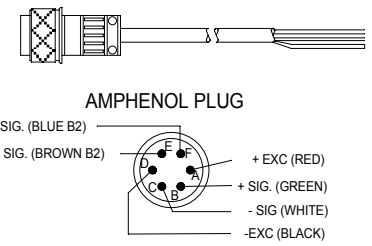


**SPECIFICATIONS:**

Rated Capacity, (COMPRESSION)	120,000 pounds
Rated Output, typical	2 mV/V
Combined error	0.05 % F.S.
Non-repeatability	0.01 % F.S.
Zero Balance	1 % R.O.
Temperature Range, Compensated	50 F to 120 F
Temperature Effect, Output	0.0008 % of load / F
Temperature Effects, Zero Balance	0.002 % / R.O. / F
Bridge Impedance, Typical	700 ohms
Excitation Voltage, Typical	10 VDC or VAC rms
Excitation Voltage, Maximum	15 VDC or VAC rms
Insulation Resistance	> 5,000 megohms at 50 VDC
Overload, Safe	200 % over capacity
Overload, Ultimate	300 % over capacity
Deflection at Rated Capacity, Approximate	0.003 inch
Construction	Tool Steel

Cable color code:

Green or Yellow	+ Excitation
Black	- Excitation
White	+ Signal
Red	- Signal
Shield	Floats at cell
Cell Receptacle, Bendix	MS3112E-10-6P
Cable Plug, Bendix, (Length T.B.D.)	PT06A-10-6S



\*SS1288-120K is a single bridge load cell for use in tension or compression.  
 \*SS1288-120KD is a dual bridge load cell for use in tension or compression.

	Designed By: <b>Mettert</b>	Date: <b>9/21/99</b>	Title / Description: <b>SS1288 120,000 POUND CALIBRATION LOAD CELL SPECIFICATIONS</b>		Part No. <b>SS1288-120K, SS1288-120KD*</b>
	Drawn By:	Date:	Dwg. Size: <b>A</b>		File Name <b>11423SP.FCD</b>
	Approved By:	Date:	Dwg. Type: <b>SPEC</b>	Doc. No. <b>11423</b>	

Page 1 of 1