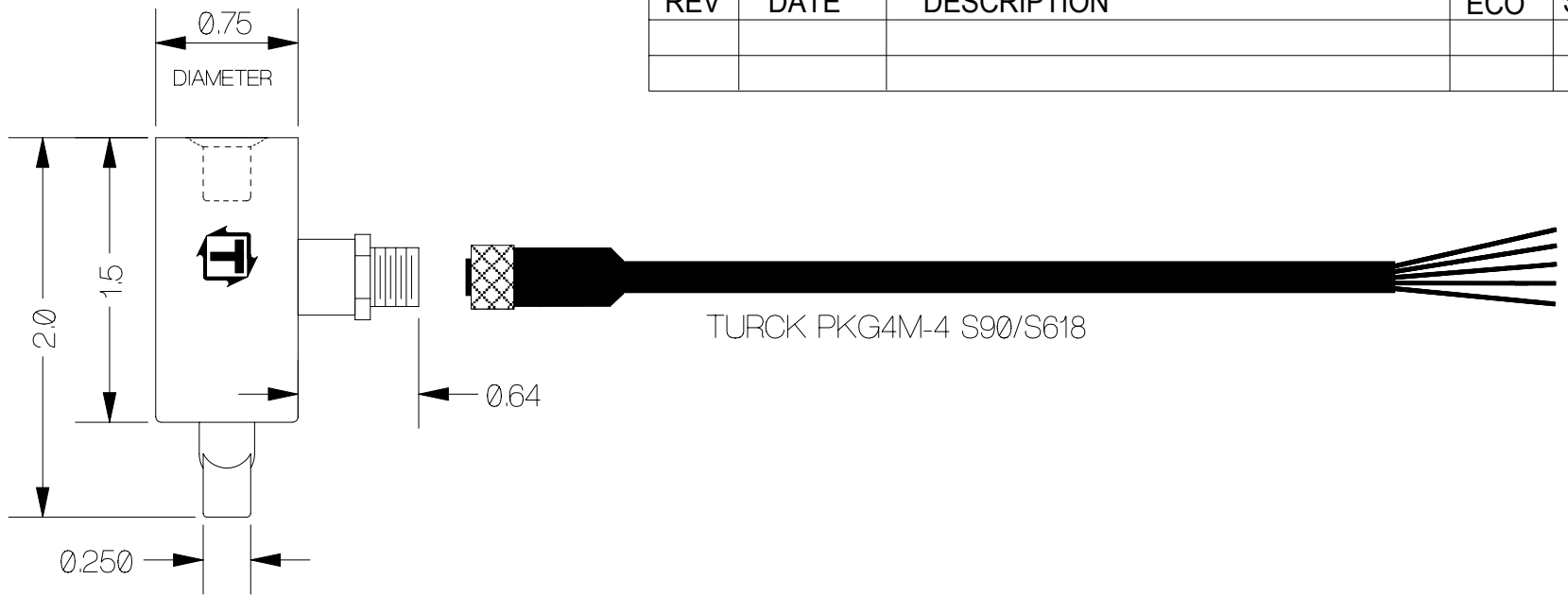


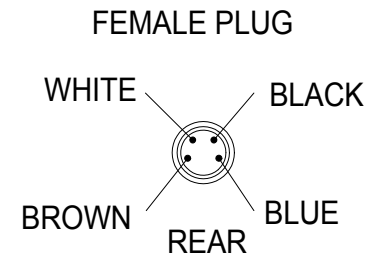
REV	DATE	DESCRIPTION	ECO	SIGN



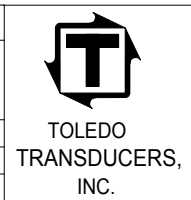
SPECIFICATIONS:

RATED CAPACITY	150 Lb-in.
RATED OUTPUT	2 mV/V typical
COMBINED ERROR	± 0.25% F.S.
NON-REPEATABILITY	0.01 %
ZERO BALANCE	± 10 %
TEMPERATURE RANGE, COMPENSATED	+60 TO 160° F
TEMPERATURE EFFECT, OUTPUT	0.001 % of Load / ° F
TEMPERATURE EFFECT, ZERO BALANCE	Not rated
INPUT IMPEDANCE, OUTPUT IMPEDANCE	350 OHMS, typical
EXCITATION VOLTAGE (typical)	10 VDC or VAC rms
EXCITATION VOLTAGE, MAXIMUM	15 VDC or VAC rms
INSULATION RESISTANCE	5,000 MEG OHMS @ 50 VDC
MAXIMUM LOAD, SAFE	150 % F.S.
MAXIMUM LOAD, ULTIMATE	200 % F.S.
CONSTRUCTION	ALLOY STEEL ELEMENT

PIN NO.	WIRE COLOR CODE:	CABLE COLOR
1	+EXCITATION	BROWN
2	-SIGNAL	WHITE
3	-EXCITATION	BLUE
4	+ SIGNAL	BLACK



TOLERANCES UNLESS OTHERWISE SPECIFIED:	
.XXX = ± 0.005	SCALE: FULL
.XX = ± 0.015	
.X = ± 0.025	



Designed By:	Mettert
Drawn By:	
Approved By:	

Date:	1/6/97
Date:	
Date:	

Title / Description:		
150 Lb-in. TORQUE TRANSDUCER		
Dwg. Size:	Dwg. Type:	
A	SPEC	Page 1 of 1

Part No.	SS11351150
File Name	16038SP.FCD
Doc. No.	16038