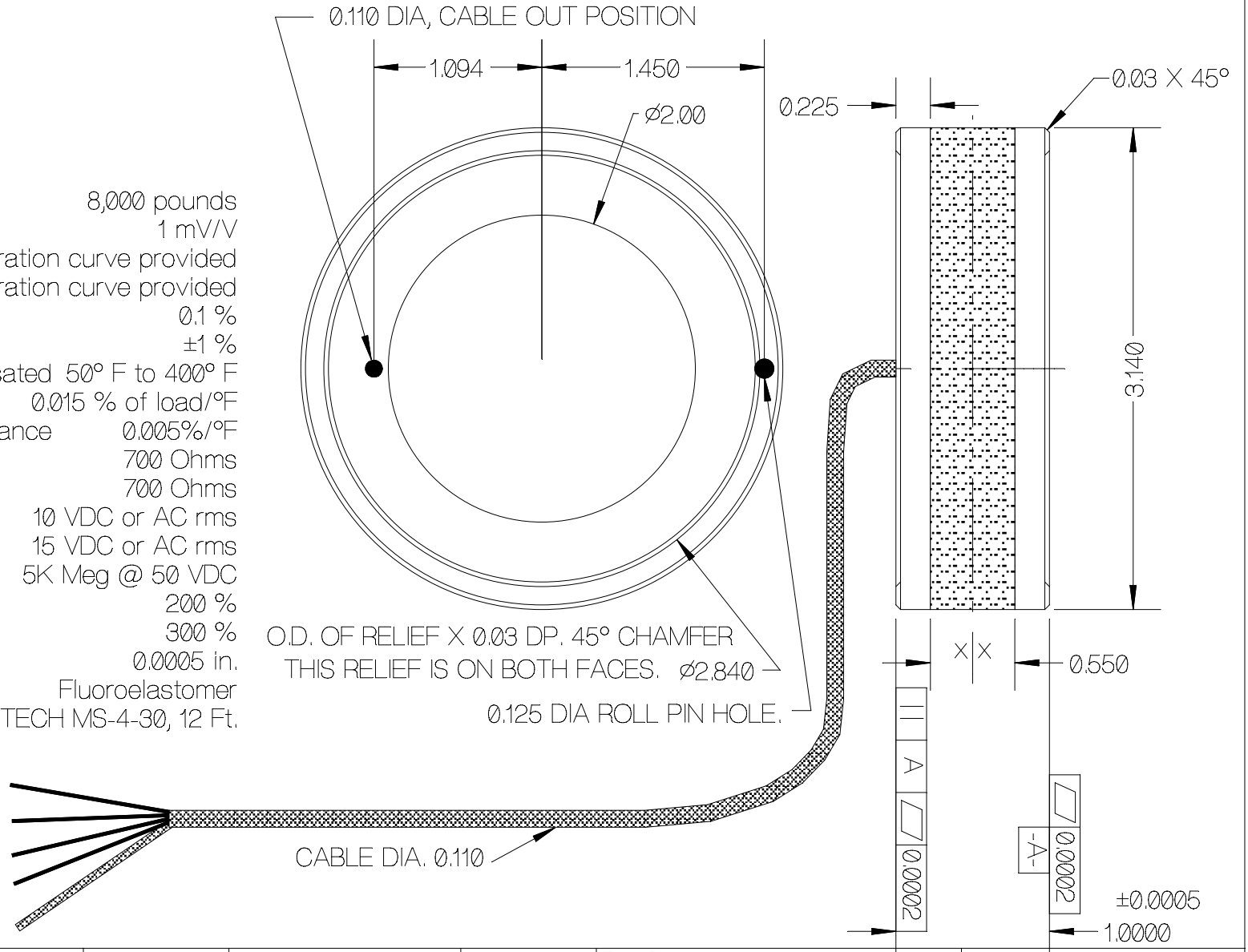


REV	DATE	DESCRIPTION	ECO	SIGN
1	12/09/96	RELEASE FOR QUOTING PURPOSES	446	RAB
2	12/20/96	RELEASE TO PILOT	451	RAB

Rated Capacity, compression 8,000 pounds
 Rated Output, typical 1 mV/V
 Error Band 0.5%, Calibration curve provided
 Hysteresis 0.5%, Calibration curve provided
 0.1 %
 ±1 %
 Temperature Range, Compensated 50° F to 400° F
 Temperature Effects, Output 0.015 % of load/°F
 Temperature Effects, Zero Balance 0.005%/°F
 Input Impedance 700 Ohms
 Output Impedance, (typical) 700 Ohms
 Excitation Voltage, (typical) 10 VDC or AC rms
 Excitation Voltage, Maximum 15 VDC or AC rms
 Insulation Resistance 5K Meg @ 50 VDC
 Maximum Load, Safe 200 %
 Maximum Load, Ultimate 300 %
 Deflection, typical 0.0005 in.
 Potting material Fluoroelastomer
 CABLE COLOR CODE: MICROTECH MS-4-30, 12 Ft.
 YELLOW + EXC.
 BLACK - EXC.
 WHITE + SIG.
 RED - SIG.



TOLERANCES UNLESS OTHERWISE SPECIFIED:
 XXX = ± 0.005
 XX = ± 0.015
 X = ± 0.025
 FINISH: NO MACHINE MARKS
 MAT'L: 4340
 HARDNESS: Rc 40-44



Designed By: Mettert
 Date: 12/3/96
 Drawn By:
 Date:
 Approved By:
 Date:

Title / Description:
 8,000 POUND DOUGHNUT
 LOAD CELL SPECIFICATIONS
 Dwg. Size: A
 Dwg. Type: SPEC
 Page 1 of 1

Part No. SS1125
 File Name 10187.LC.FCD
 Doc. No. 10187